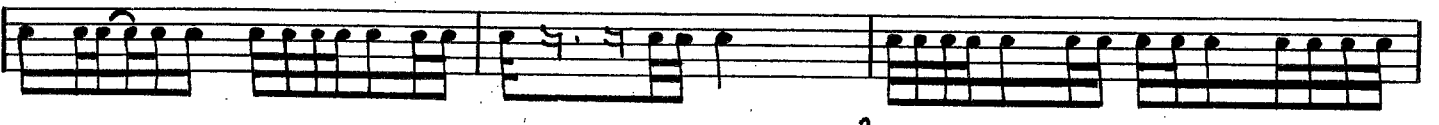
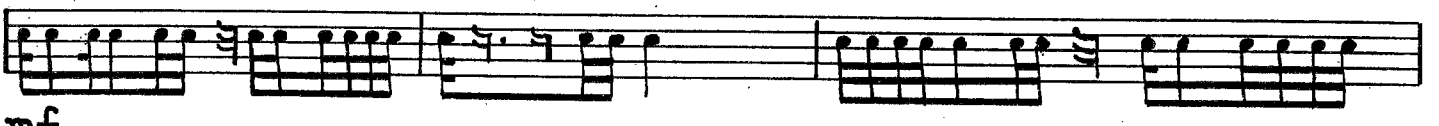


19

$\text{♩} = 72$ Andante



Start



End



I Love You

Mark and Ewelina Ford

Start

Waltz-like ($\text{♩} = \text{c. } 56$) 5 *a tempo*

dolce *rit.* *mp* *mf* *p*

This system contains the first five measures of the piece. The music is in 3/4 time. The first measure is a whole rest. The second measure has a half note G4 and a quarter note F4. The third measure has a half note E4 and a quarter note D4. The fourth measure has a half note C4 and a quarter note B3. The fifth measure has a half note A3 and a quarter note G3. The tempo is marked 'Waltz-like' with a quarter note equal to approximately 56 beats per minute. A box with the number '5' is placed above the fifth measure. The dynamics are *dolce* and *rit.* for the first three measures, *mp* for the fourth, and *mf* and *p* for the fifth. A large black bracket on the left side of the system indicates the start of the piece.

9 *mp* *p*

This system contains measures 6 through 9. The music continues with a half note G4 and a quarter note F4 in measure 6, a half note E4 and a quarter note D4 in measure 7, a half note C4 and a quarter note B3 in measure 8, and a half note A3 and a quarter note G3 in measure 9. The dynamics are *mp* for measures 6 and 7, and *p* for measures 8 and 9.

End

17 21 *mf* *mp*

This system contains measures 10 through 21. The music continues with a half note G4 and a quarter note F4 in measure 10, a half note E4 and a quarter note D4 in measure 11, a half note C4 and a quarter note B3 in measure 12, a half note A3 and a quarter note G3 in measure 13, a half note G3 and a quarter note F3 in measure 14, a half note E3 and a quarter note D3 in measure 15, a half note C3 and a quarter note B2 in measure 16, a half note B2 and a quarter note A2 in measure 17, a half note A2 and a quarter note G2 in measure 18, a half note G2 and a quarter note F2 in measure 19, a half note F2 and a quarter note E2 in measure 20, and a half note E2 and a quarter note D2 in measure 21. The dynamics are *mf* for measures 17 and 18, and *mp* for measures 19 through 21. A box with the number '21' is placed above the 21st measure. A large black bracket on the left side of the system indicates the end of the piece.

25 *f*

This system contains measures 22 through 25. The music continues with a half note D2 and a quarter note C2 in measure 22, a half note C2 and a quarter note B1 in measure 23, a half note B1 and a quarter note A1 in measure 24, and a half note A1 and a quarter note G1 in measure 25. The dynamic is *f* for measure 25.